

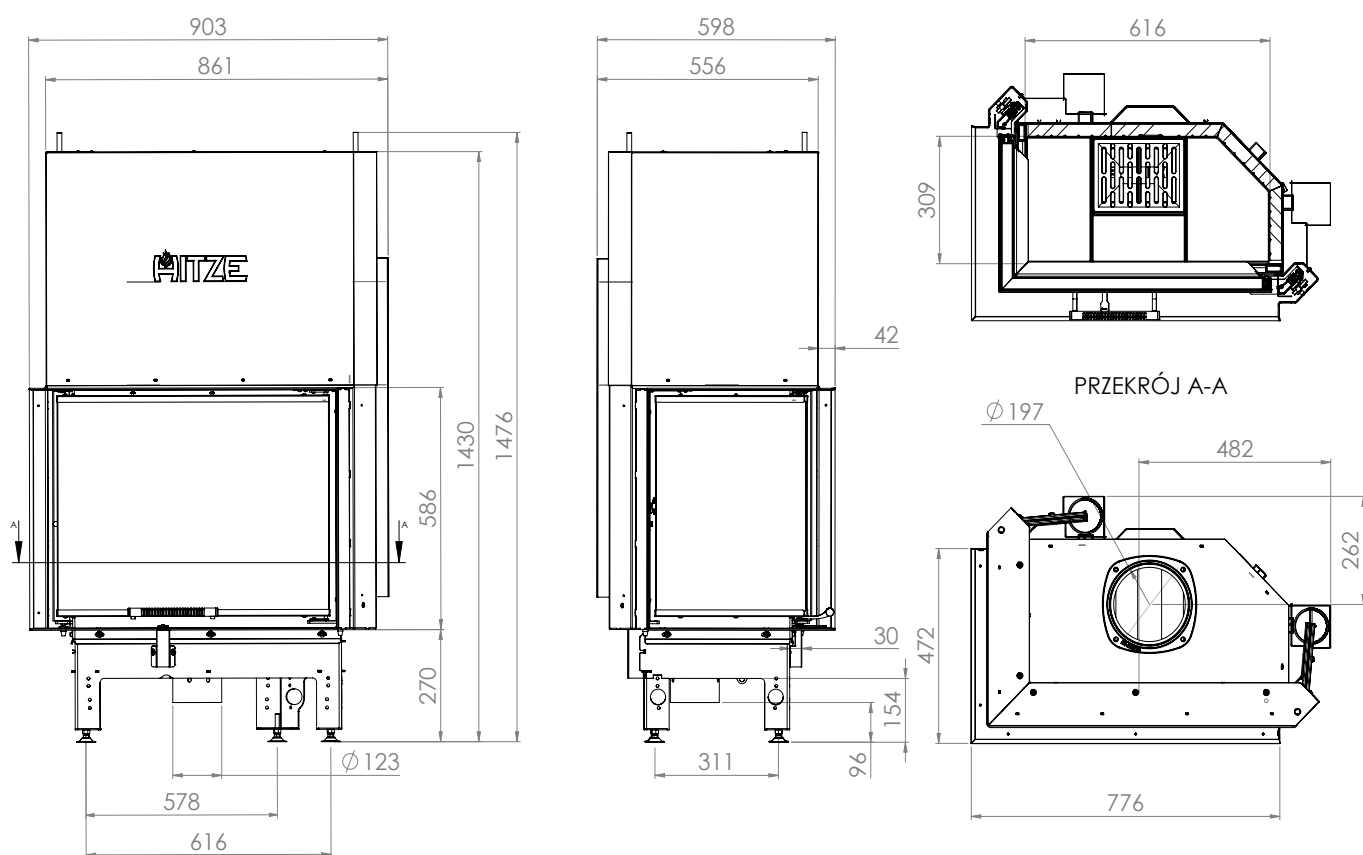
BASIC INFORMATION ABOUT THE PRODUCT



- As many as 36 models differing in heating power (9, 11, 14, 16, 19 and 25 kW), glazing (straight or corner) and door opening method (traditional or lifted up).
- Possibility of any modification of the glazing and selecting the Decor, curved glass or double glazing option.
- Inserts made of high-quality P265GH boiler steel, which is resistant to continuous operation at elevated temperatures. A reinforced door profile was used.
- Production is carried out using a modern fleet of machines: welding robots, press brakes, laser cutting machines.
- It meets restrictive exhaust emission standards and the ECODSIGN directive thanks to the use of an exhaust gas after-combustion system and high efficiency.
- The innovative ventilated handle protects against burns. Suitable for houses with heat recovery.
- A built-in intake with a damper allows for smooth, integrated regulation of the amount of air supplied.
- The air curtain provides a „clean glass“ effect, and easy cleaning is provided by a cast iron grate with a removable ash container.

| | |
|---|-------------|
| Nominal power [kW] | 16 |
| Heating load range [kW] | 8-20 |
| Thermal efficiency [%] | 80 |
| CO emission (at 13% O ₂) [g/m ³] | 0,033 |
| Pollen emission [g/m ³] | 0,786 |
| Average fuel consumption [kg/h] | 5 |
| Recommended dimensions of outlet grilles [cm ²] | 1120-1280 |
| Recommended dimensions of inlet grilles [cm ²] | 640-1040 |
| Glass dimensions [mm] | 680x530x375 |
| Flue diameter [mm] | 197 |
| Inlet diameter [mm] | 123 |
| Weight [kg] | 240 |
| Efficiency factor | 107 |





ALBERO

AL16.LG.H-D