

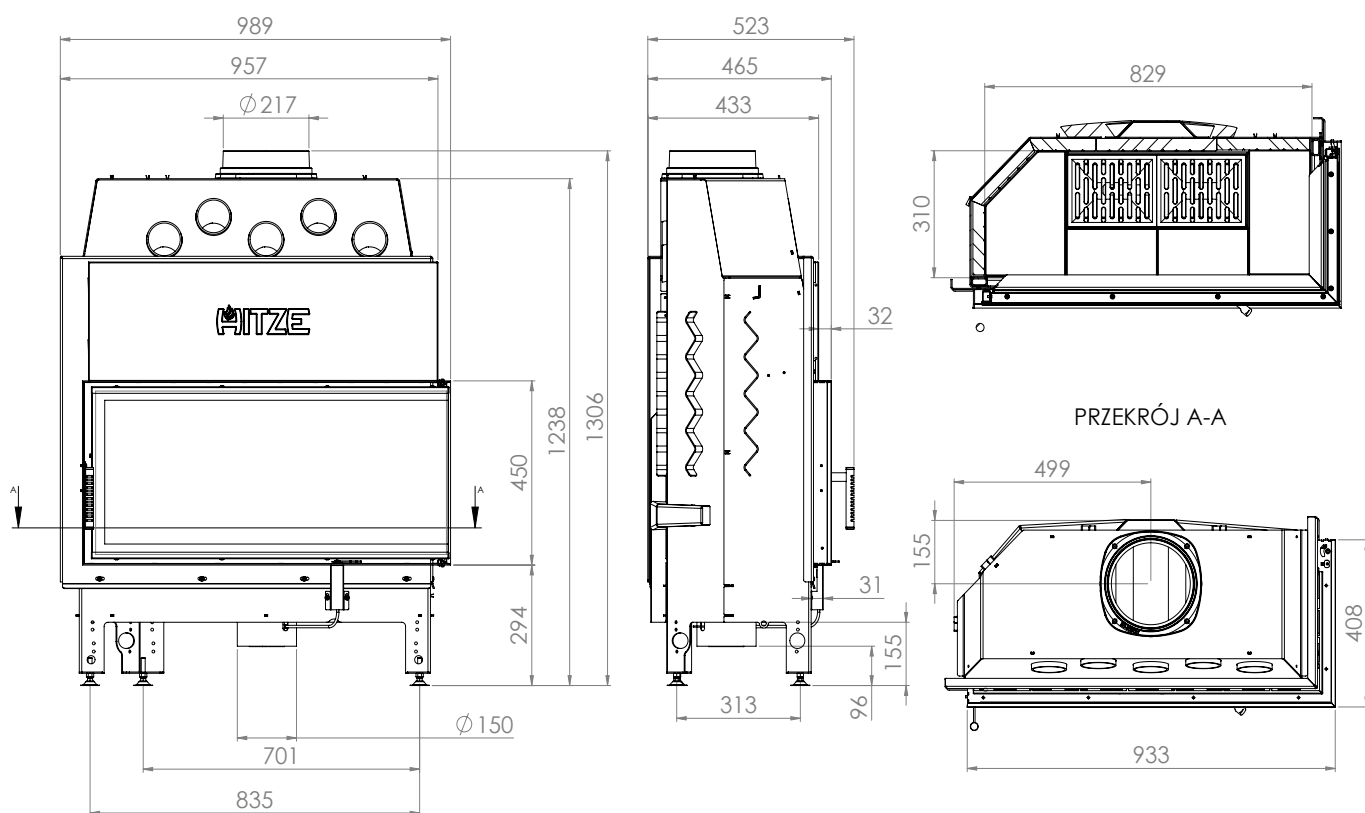
BASIC INFORMATION ABOUT THE PRODUCT



- As many as 36 models differing in heating power (9, 11, 14, 16, 19 and 25 kW), glazing (straight or corner) and door opening method (traditional or lifted up).
- Possibility of any modification of the glazing and selecting the Decor, curved glass or double glazing option.
- Inserts made of high-quality P265GH boiler steel, which is resistant to continuous operation at elevated temperatures. A reinforced door profile was used.
- Production is carried out using a modern fleet of machines: welding robots, press brakes, laser cutting machines.
- It meets restrictive exhaust emission standards and the ECODSIGN directive thanks to the use of an exhaust gas after-combustion system and high efficiency.
- The innovative ventilated handle protects against burns. Suitable for houses with heat recovery.
- A built-in intake with a damper allows for smooth, integrated regulation of the amount of air supplied.
- The air curtain provides a „clean glass“ effect, and easy cleaning is provided by a cast iron grate with a removable ash container.

|   |             |
|---|-------------|
| Nominal power [kW]  | 19          |
| Heating load range [kW]                                     | 9,5-24      |
| Thermal efficiency [%]                                      | 81          |
| CO emission (at 13% O <sub>2</sub> ) [g/m <sup>3</sup> ]    | 0,029       |
| Pollen emission [g/m <sup>3</sup> ]                         | 1,200       |
| Average fuel consumption [kg/h]                             | 6           |
| Recommended dimensions of outlet grilles [cm <sup>2</sup> ] | 1330-1520   |
| Recommended dimensions of inlet grilles [cm <sup>2</sup> ]  | 760-1240    |
| Glass dimensions [mm]                                       | 900x415x375 |
| Flue diameter [mm]  | 217         |
| Inlet diameter [mm]   | 150         |
| Weight [kg]   | 200         |
| Efficiency factor   | 108,5       |





# ALBERO

## AL19.R.H-D